

# ONOFF TRAJECTORY CONTROL SYSTEM - USER MANUAL -

CROSS BALANCE TECHNOLOGY



◆ START ◆  
 THANK YOU FOR PURCHASING OUR PRODUCT. THESE DRIVERS FEATURE THE ONOFF TRAJECTORY CONTROL SYSTEM (OTCS) WHICH ALLOWS PLAYERS TO ADJUST TRAJECTORY BASED ON WEIGHT SCREWS IN THE HEAD AS WELL AS SLEEVE ADJUSTMENTS. PLEASE READ THE MANUAL CAREFULLY FOR PROPER INSTALLATION AND USAGE. PLEASE READ THE GOLF CLUB USER MANUAL TO ENSURE PROPER CARE OF YOUR GOLF CLUBS.



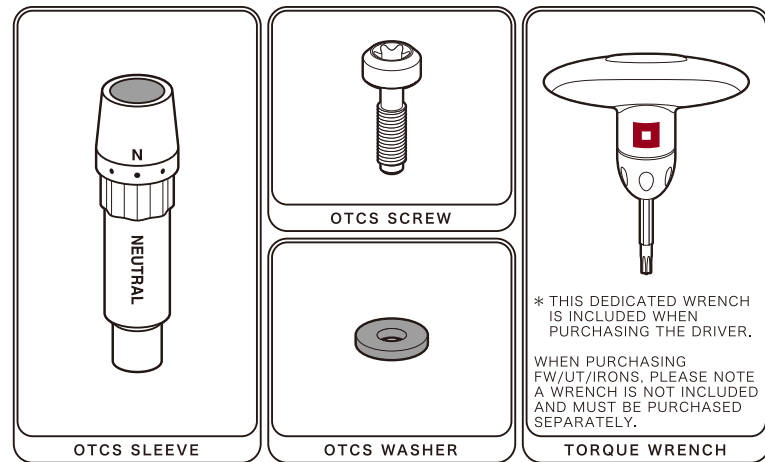
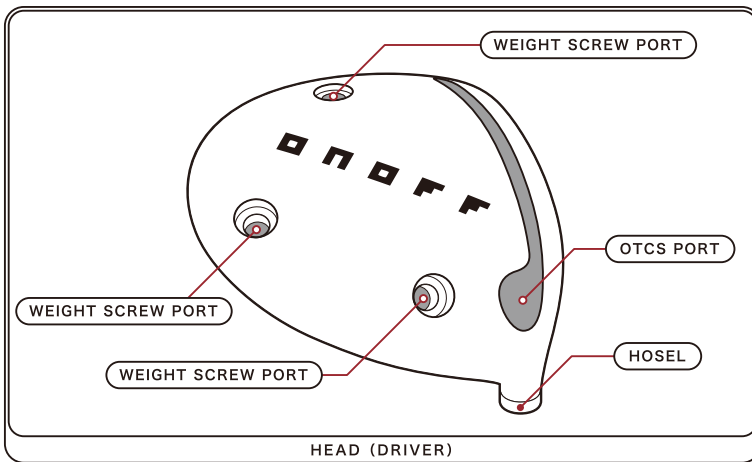
WEB SITE QR CODE

GLOBERIDE, Inc.  
 Maesawa 3-14-16, Higashikurume-shi  
 Tokyo, Japan 203-8511  
<https://onoff.globeride.co.jp/global>

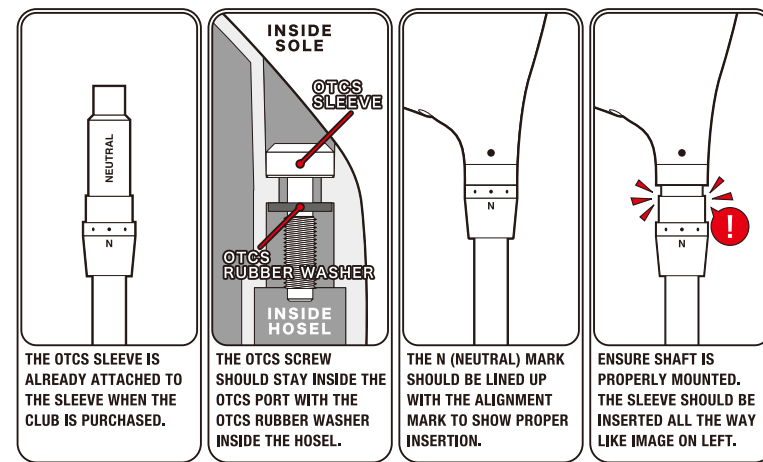
## OTCS SLEEVE POSITIONS "DRIVER"

POSITION	1	2	3	4	5	6	7	8
LOFT ANGLE	±0°	+0.5°	+1.0°	+0.5°	±0°	-0.5°	-1.0°	-0.5°
LIE ANGLE	±0°	-0.5°	-1.0°	-1.5°	-2.0°	-1.5°	-1.0°	-0.5°
FACE ANGLE	±0°	+0.5°	+1.0°	+0.5°	±0°	-0.5°	-1.0°	-0.5°

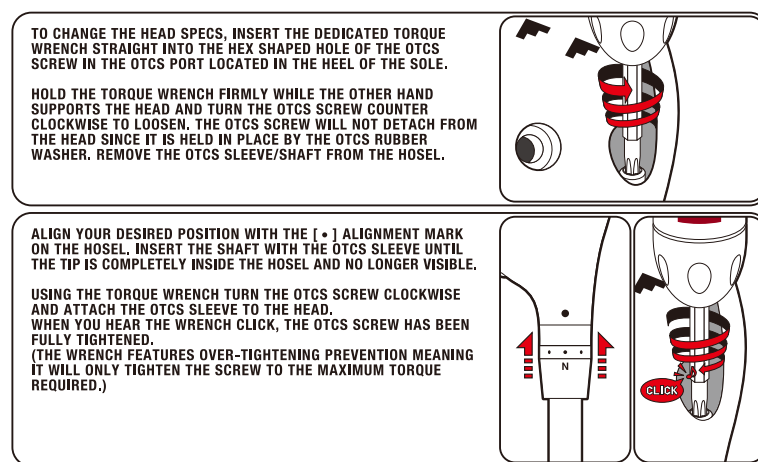
## PART NAMES "DRIVER"



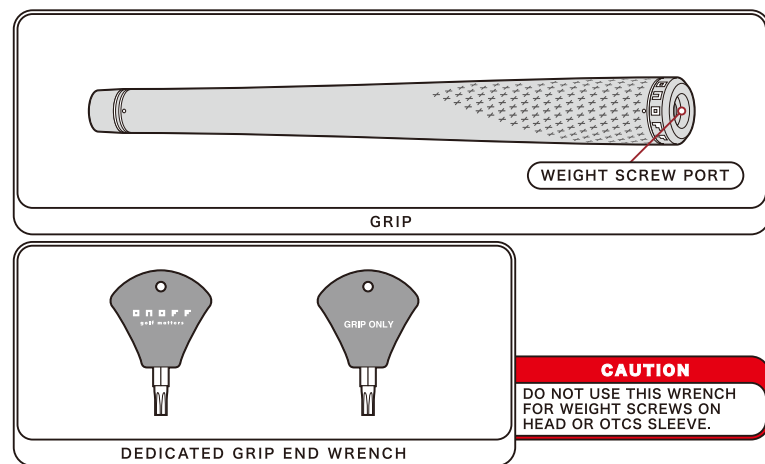
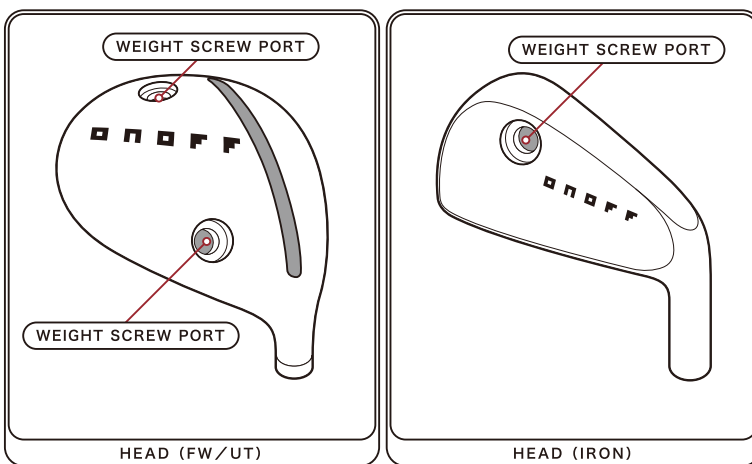
## ATTACHING AND DETACHING THE SHAFT "DRIVER"



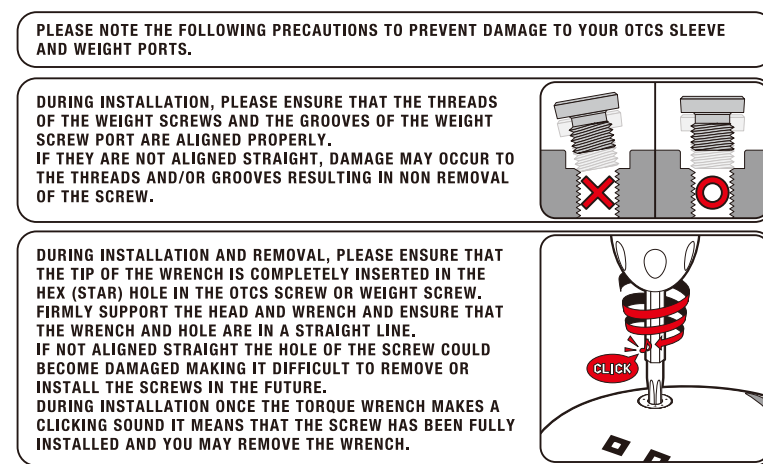
## CHANGING THE LOFT AND LIE ANGLE "DRIVER"



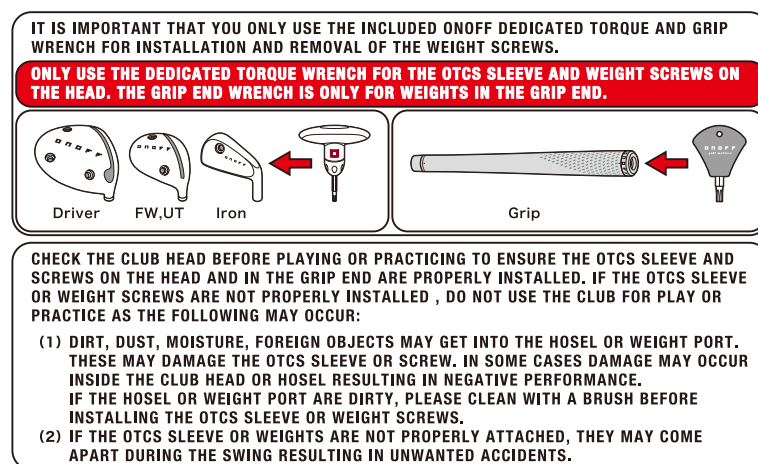
## PART NAMES



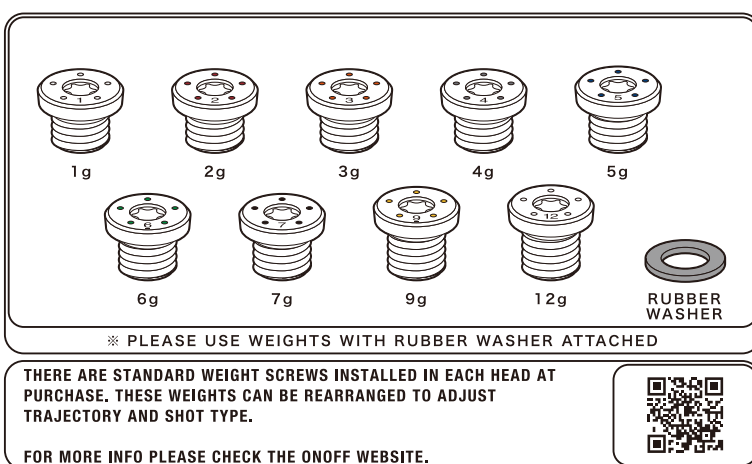
## AVOID IMPROPER INSTALLATION



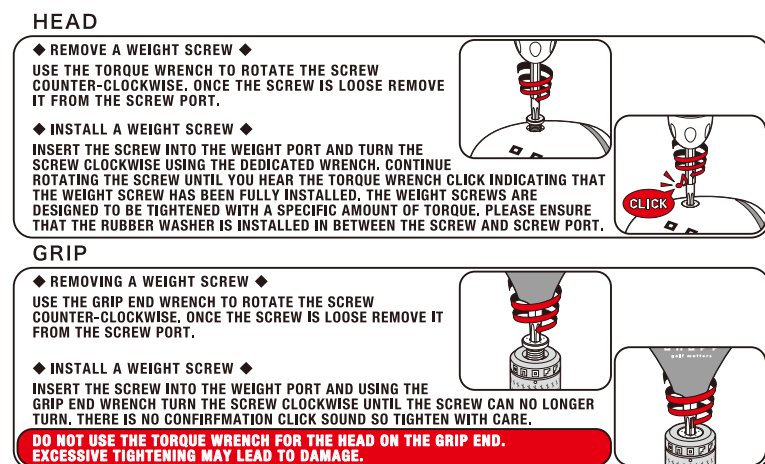
## PRECAUTIONS



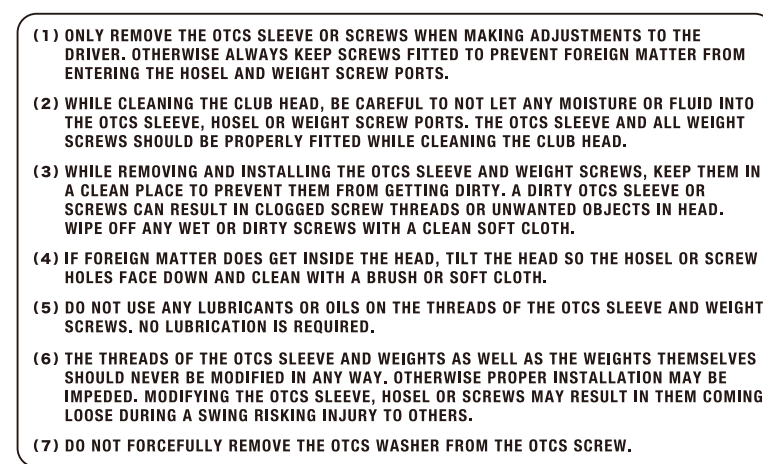
## WEIGHT SCREWS



## REMOVING AND INSTALLING WEIGHT SCREWS



## STORAGE AND CARE PRECAUTIONS



## GOLF RULES PRECAUTIONS

